

# ReliChrom™ DA400/SS

Lot. E905A135

## Column dimensions:

Internal Diameter i.d.	0.8 cm
Length	10 cm
Area	0.5 cm <sup>2</sup>
Resin volume	5 ml
Theoretical plates N	1395 m <sup>-1</sup>
Asymmetry A <sub>s</sub>	1.00

## Experimental conditions

Sample	100 µl 1% Acetone (v/v)
Mobile phase	50 mM TRIS/HCl, 0.9% NaCl, pH 8.0
Flow velocity	1.25 ml/min

## Instructions for use

### Preliminary set up:

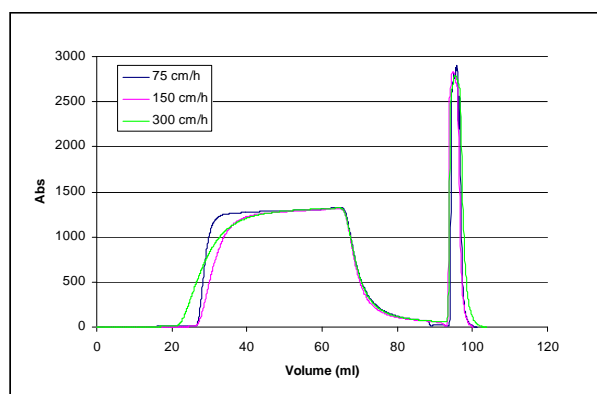
- Rinse the chromatographic system circuit with DI water;
- After the removal of the upper stopper of the ReliChrom™ column, connect it to the chromatographic unit;
- Remove the bottom stopper of ReliChrom™ column and connect the column outlet to the specific device of your chromatographic system (Detectors, fraction collector...).

### Operation mode:

- wash out the conditioning solution with 10 BV of DI water;
- start the equilibration with the desired buffer solution at an appropriate linear flow rate;
- run the chromatographic separation according to your individual protocol at the same flow rate as in the previous step;
- if necessary, perform a regeneration step following the instructions here below:
  - Regenerate with 1 ÷ 1.5 BV of NaOH 0.5 ÷ 1 M
  - Displace the regenerant with 2 BV of DI water
  - Rinse with 5 – 10 BV of DI water

## BSA capacity vs linear velocity

**Feed solution:** 10 g/l BSA in 20 mM TRIS-HCl buffer pH 7  
**Buffer equilibration:** 6 BV of 20 mM TRIS HCl buffer pH 7  
**BSA loading:** 12 BV  
**Displacement:** 6 BV of 20 mM TRIS HCl buffer pH 7  
**Elution:** 6 BV of TRIS-HCl buffer pH 7 + 4 BV of NaCl 2M



### Notice:

All data and suggestions made herein are based upon our research and are believed to be accurate. However, no guarantee is made or implied since conditions and methods of use of our products are beyond our control. Our products are sold on the conditions that the user will evaluate them himself, as well as our formulae and recommendations, to determine their suitability for his own purpose. Also, statements as to the use of our products are not to be construed as recommendations for their use in the infringements of any patent.